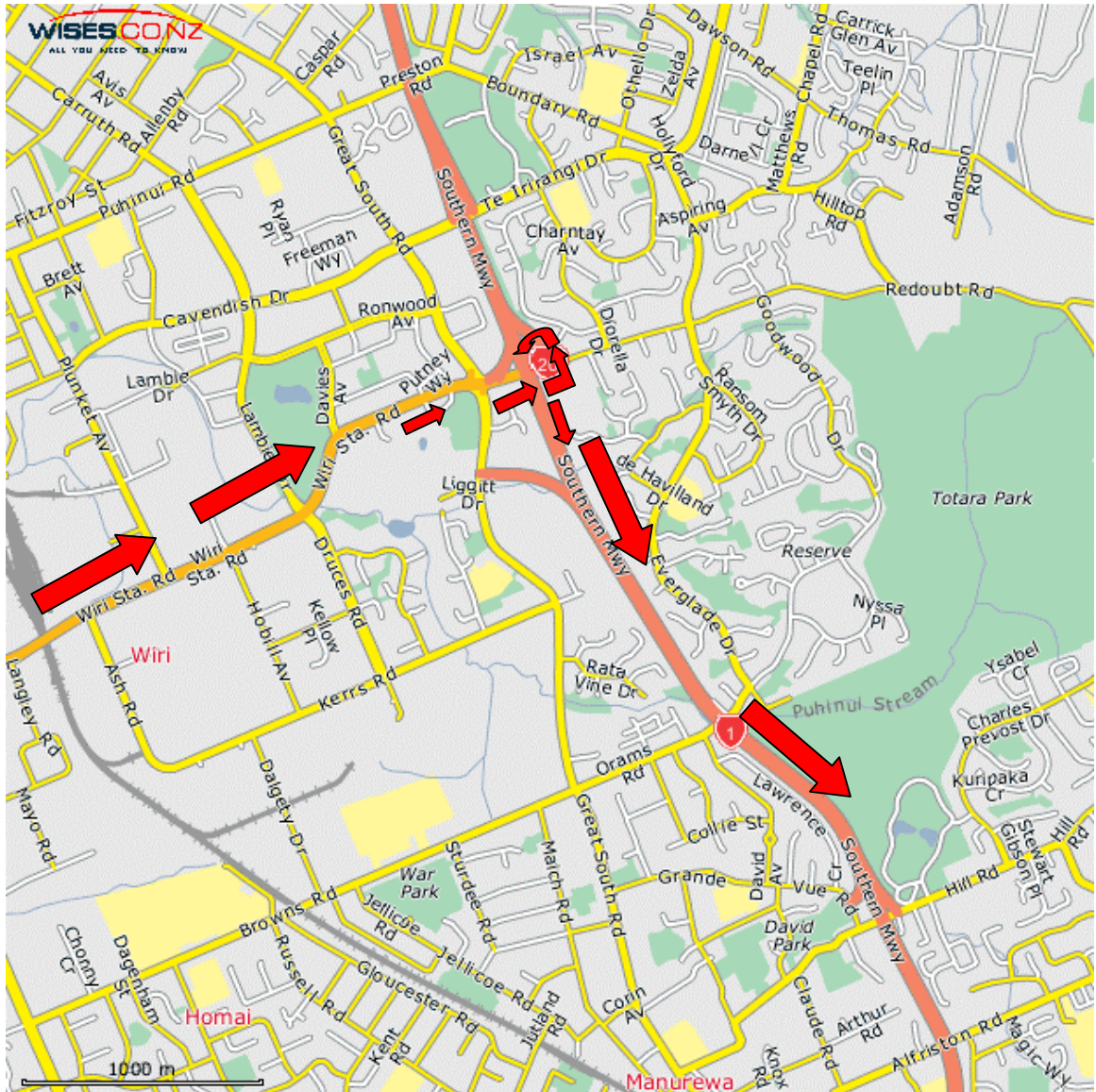


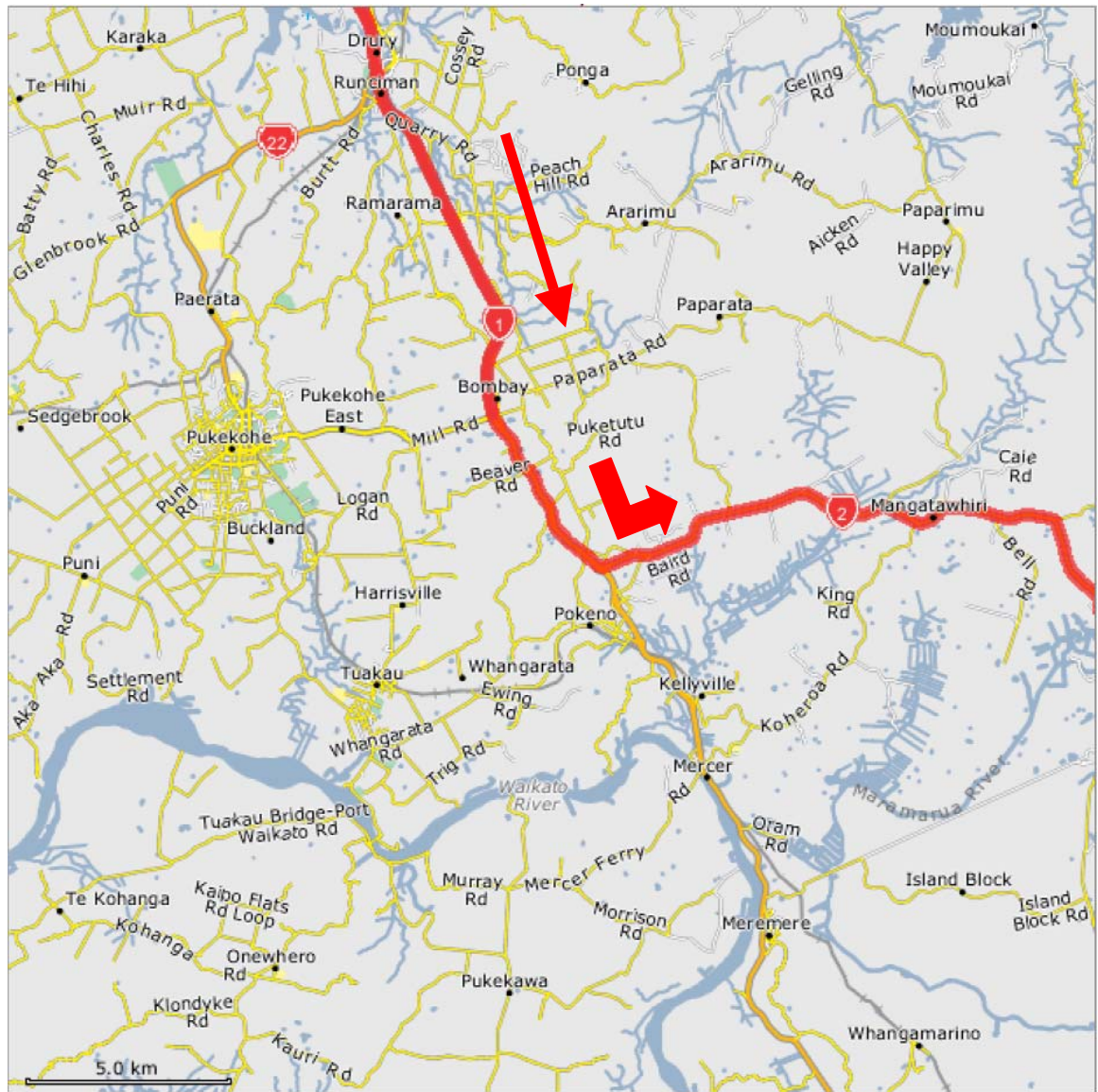
From Puhinui Road, turn right onto South-Western Expressway/SH 20 and continue for 1.076 kilometres

Continue onto Roscommon Road for 0.704 kilometres

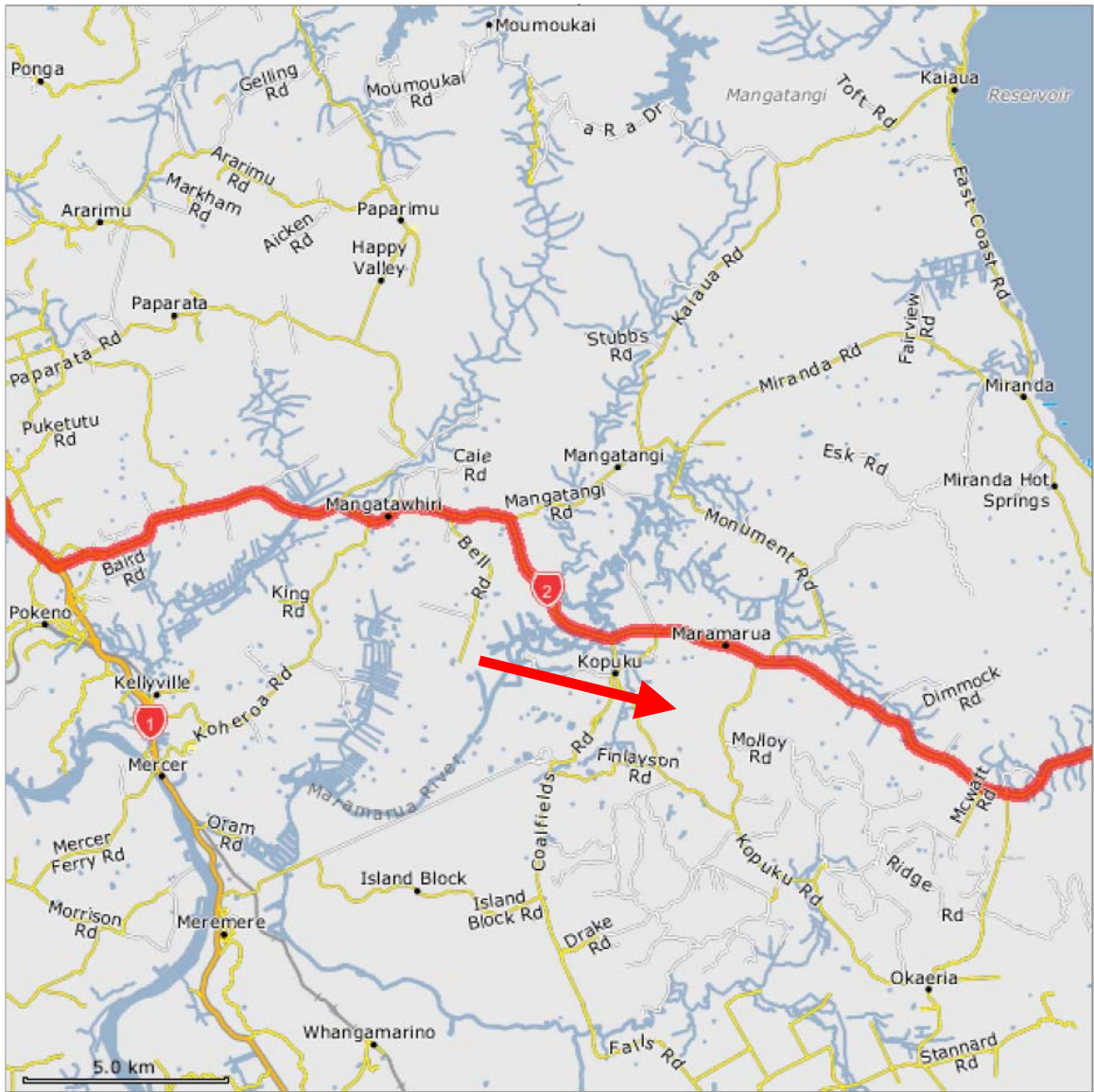
Intersection - turn left onto Wiri Sta. Road and continue for 3.177 kilometres



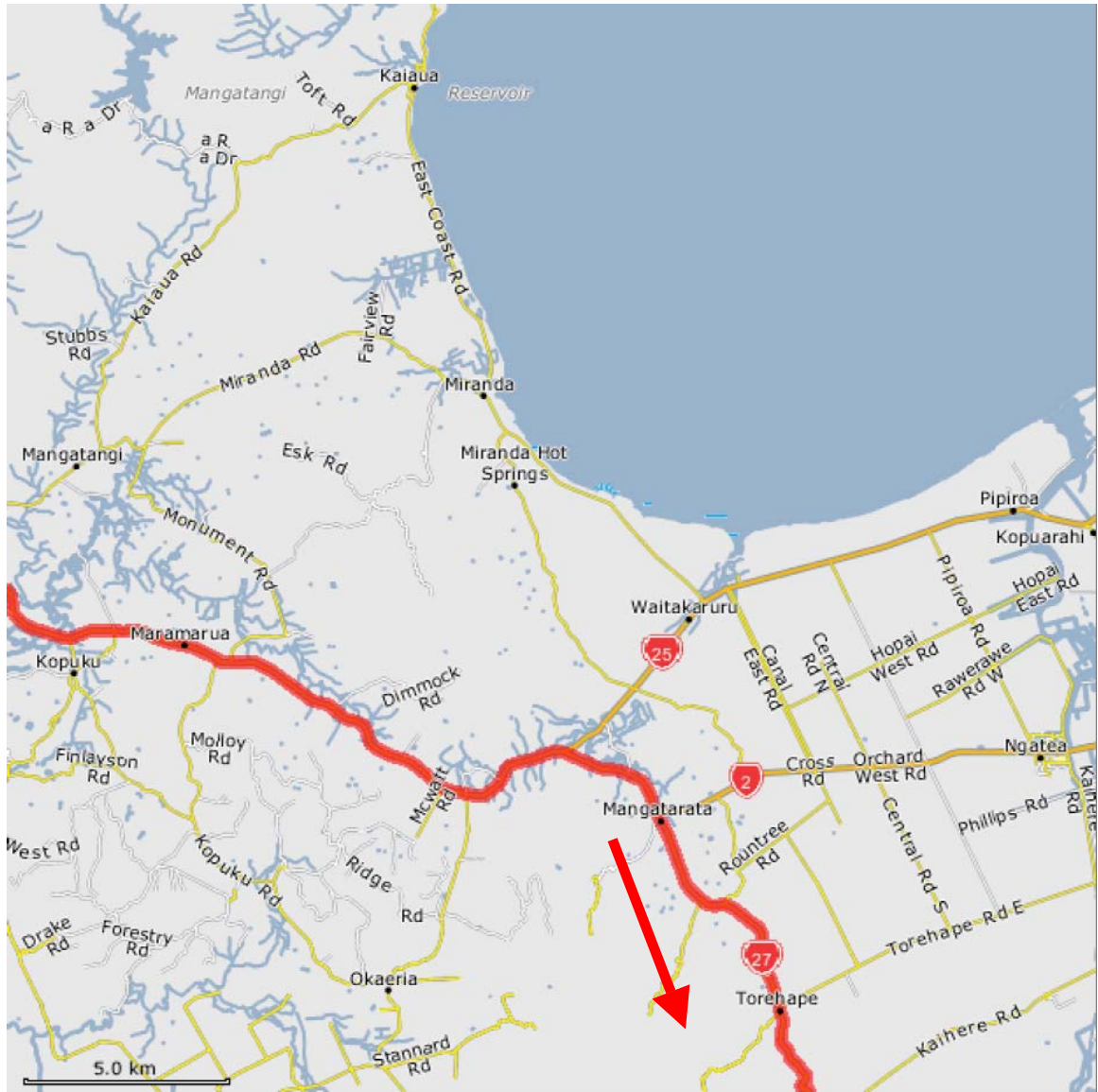
Intersection – Turn onto Southern Motorway (SH 1) and continue South



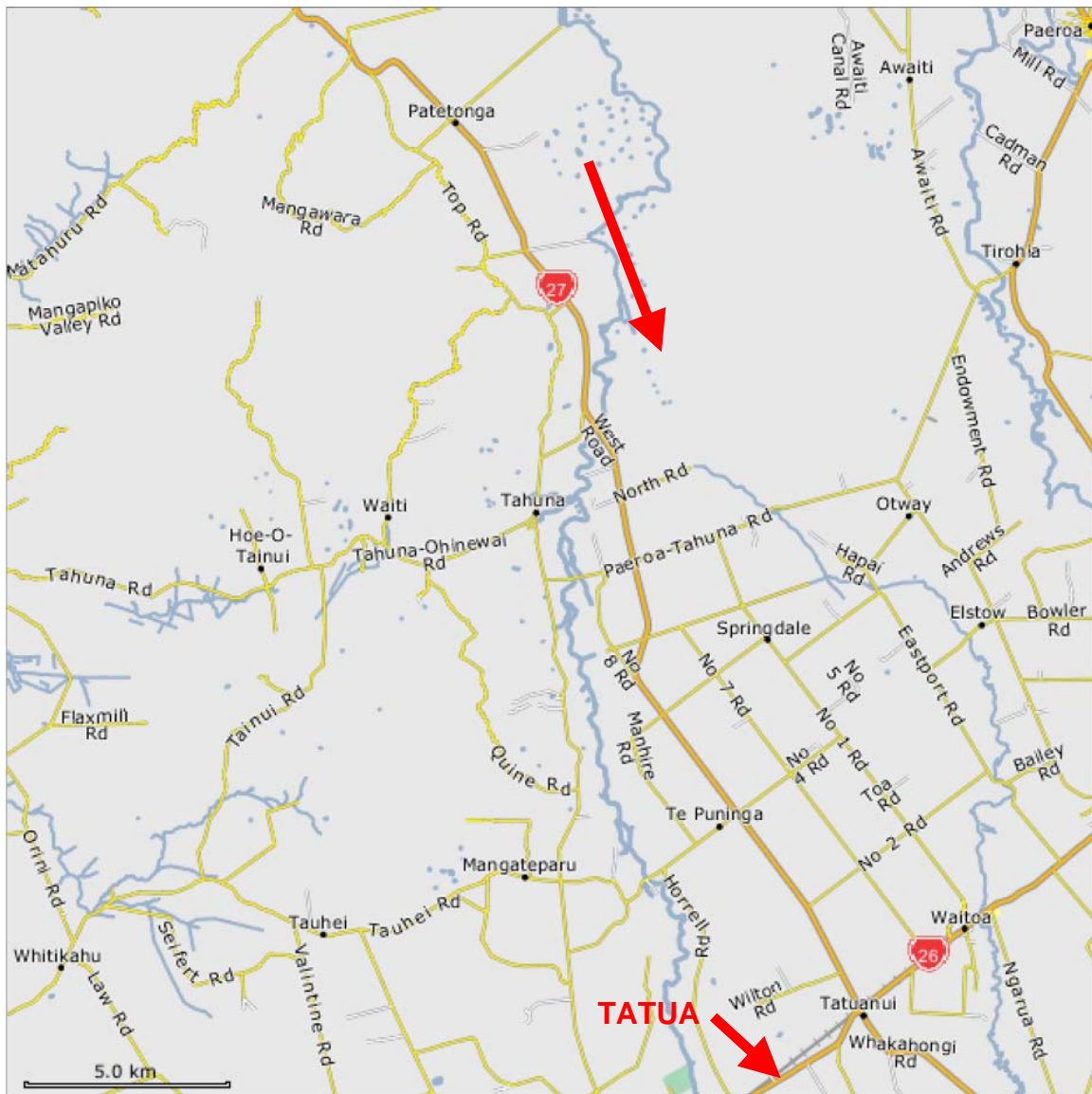
Turn off State Highway 1 before Pokeno onto State Highway 2



Continue East on State Highway 2



In Mangatarata, leave State Highway 2 for State Highway 27



Continue on State Highway 27 to Tatuanui.

Turn right at junction with railway line.

Continue for about 200m. Tatua is on the left.